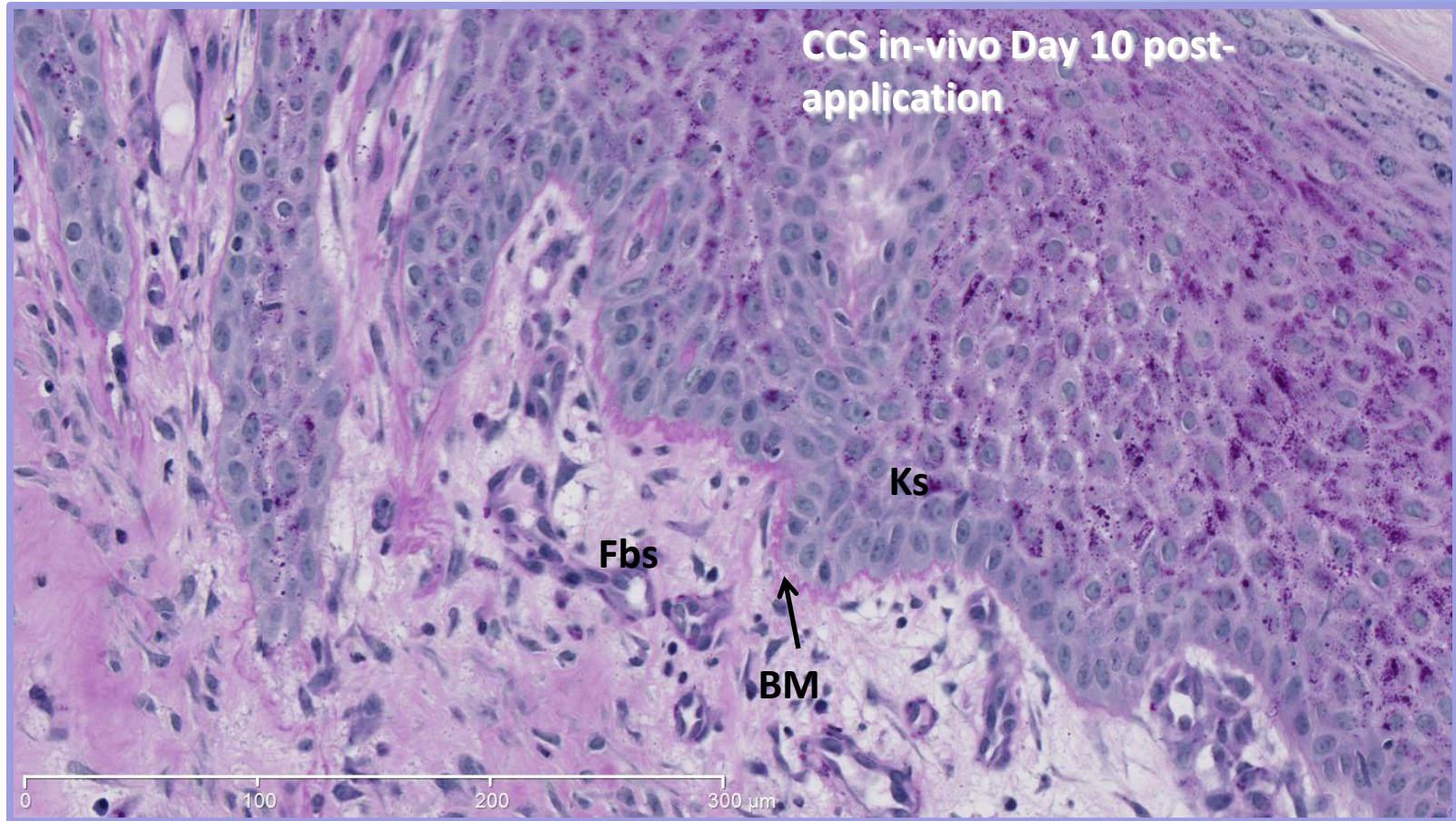


# THE NOVOSKIN PROGRAM



**A/Professor John E Greenwood AM**

BSc(Hons), MBChB, MD, FRCS(Eng), FRCS(Plast), FRACS

Director, Adult Burn Service, Royal Adelaide Hospital, South Australia

Director, Skin Engineering Laboratory, SA Pathology

Director, Novoskin Pty Ltd

# TWO STAGE PROCESS

- BTM

- Applied immediately post-burn excision
- Provide a structure to guide dermal invasion
- Prevent or minimise wound contraction
- Prevent infection
- Reduce pain
- Temporarily 'close' the wound
- Prepare the wound bed for composite

- CCS

- Applied when ready
- Should have ability to definitively 'close' the wound
- Should ideally consist of an autologous collagen matrix produced by fibroblasts, infiltrated by endothelial cell-lined 'vessels', surfaced by keratinocytes anchored by a basement membrane
- Should 'take' onto the prepared BTM

## ❖ ISO 10993 safety studies

### ❖ *In-vitro* studies thus far:

- human skin cell cytotoxicity
- human skin cell mat matrix compatibility
- human skin cell foam matrix compatibility

### ❖ *In-vivo* studies thus far:

- rat implantation safety
- sheep wound engraftment
- pig engraftment; immediate and delayed
- pig comparative; BTM vs Integra<sup>®</sup>
- pig; integrated BTM plus CEA
- Pig; integrated BTM plus CCS

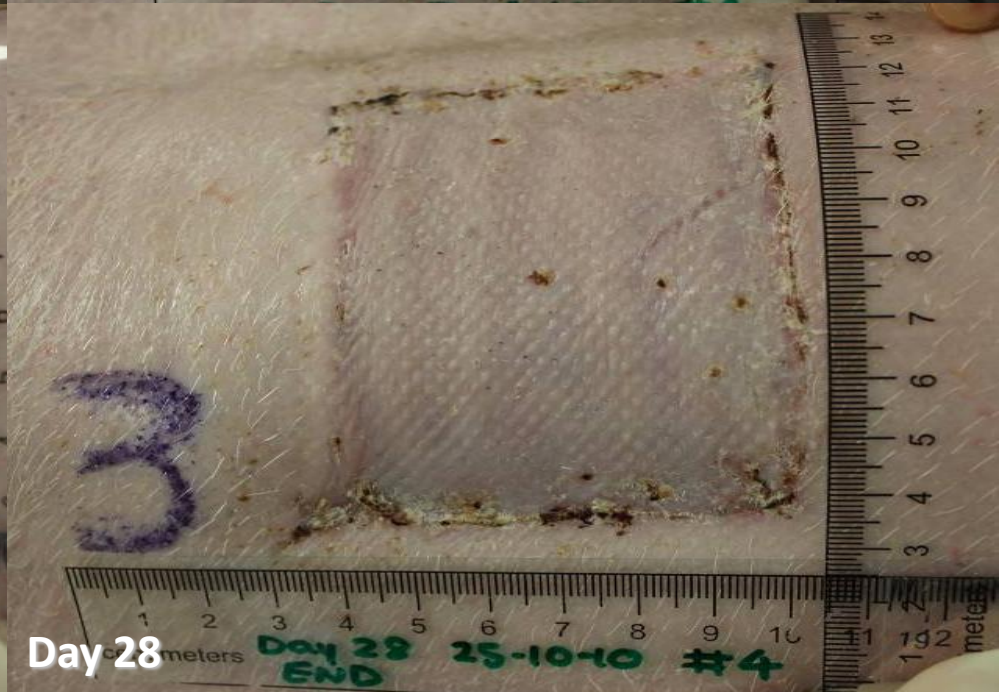
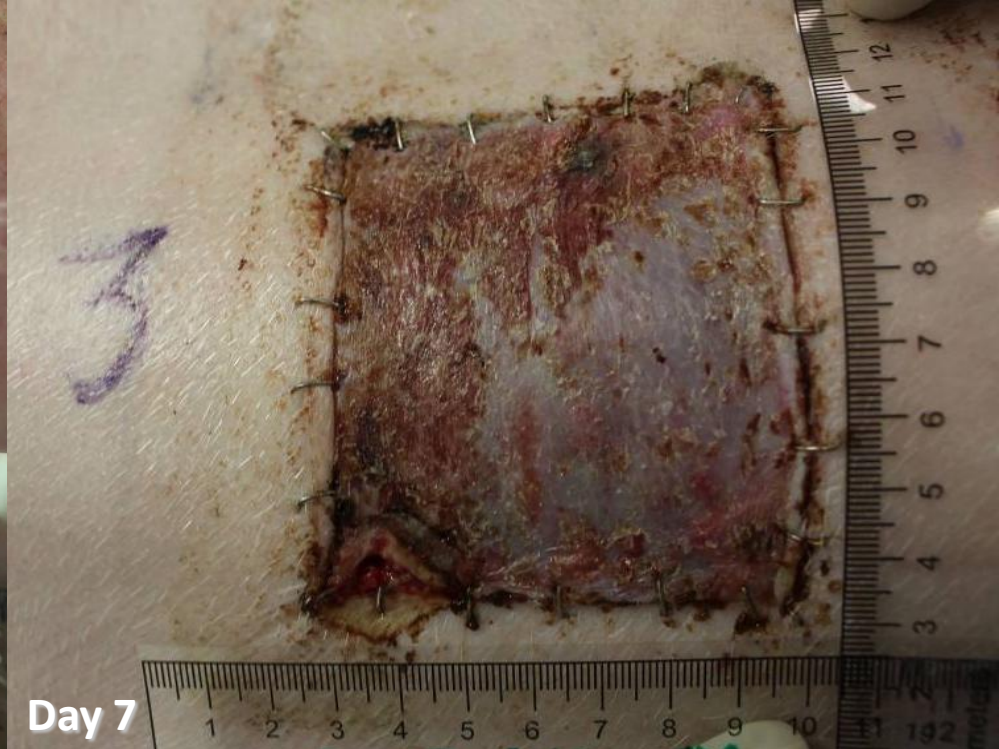
# PRODUCTS

- **IDT** (Immediate Dermal Template)
- **BTM** (Biodegradable Temporising Matrix)
- **CCS** (Cultured Composite Skin)
- **BTM Generations** (Pharmaceutical/Cytokine Elution)
- **CCS Generations** (Vasculature, Adenexae, Pigmentation)

IDT

(Immediate Dermal Template)





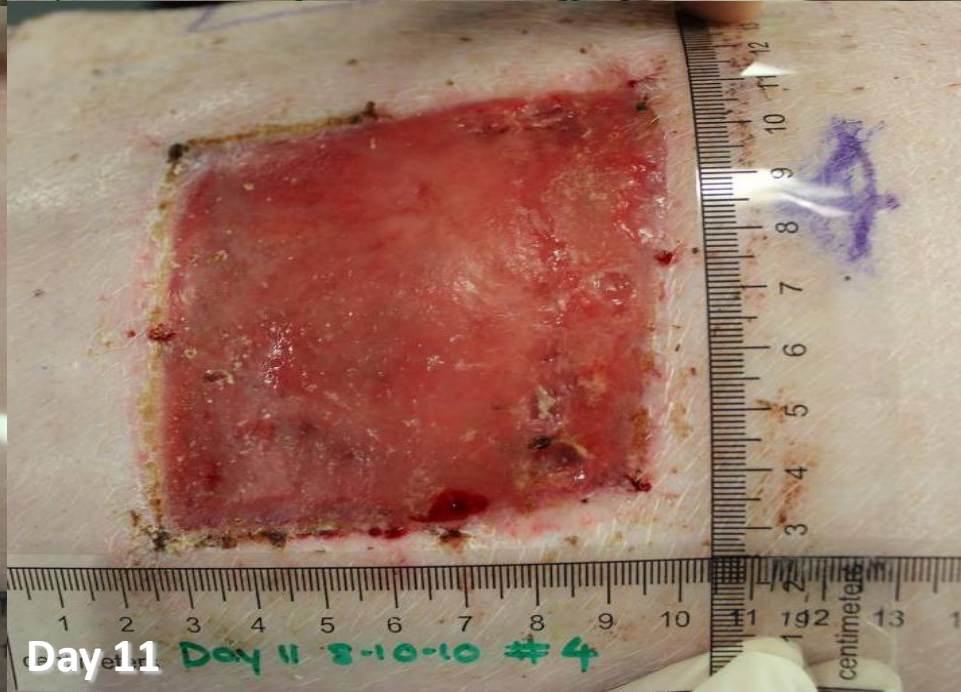
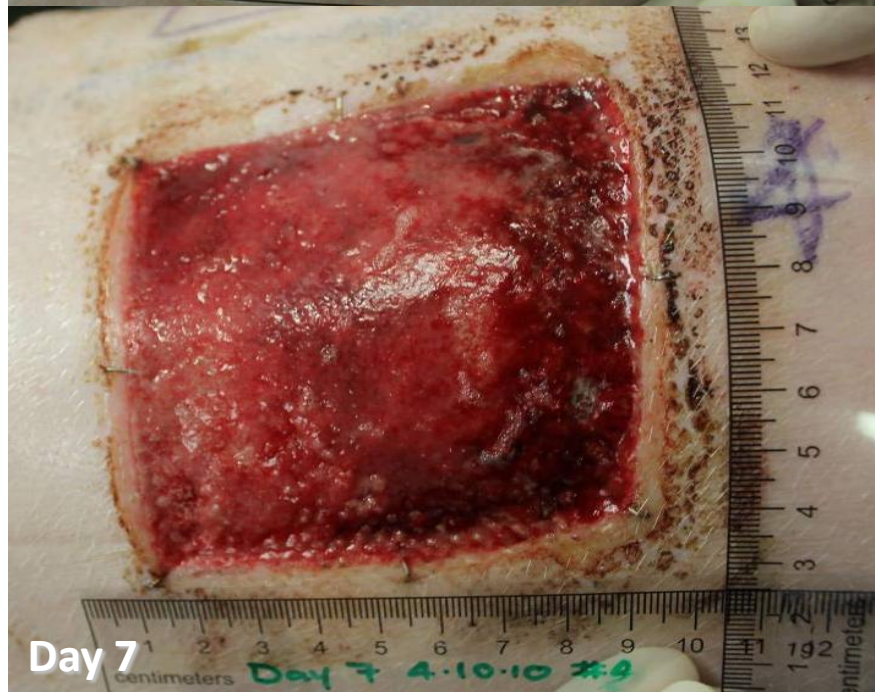




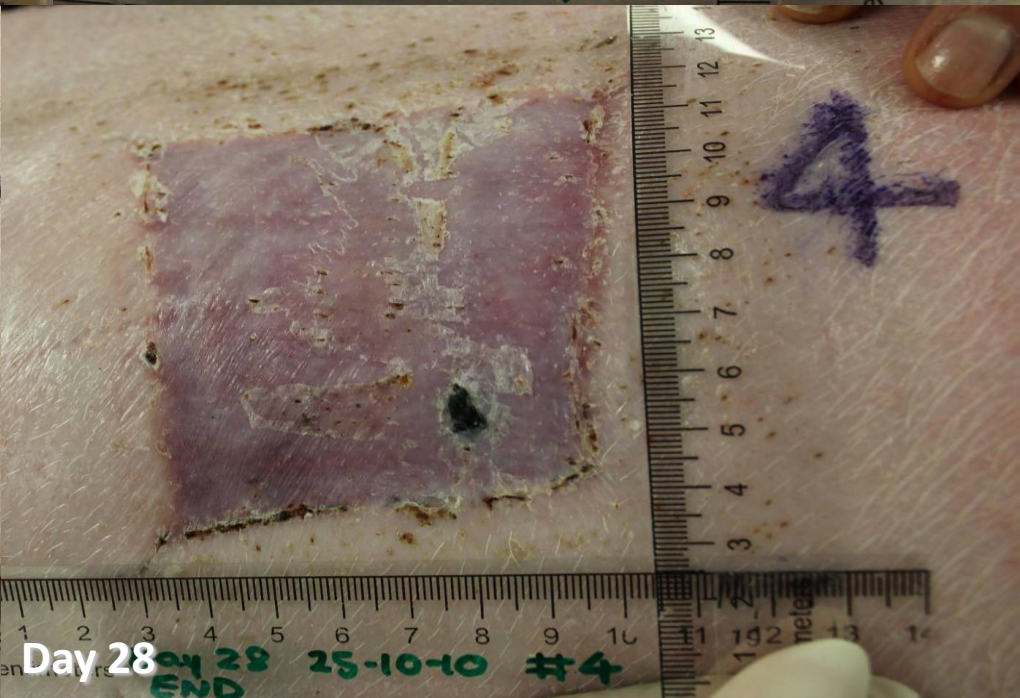
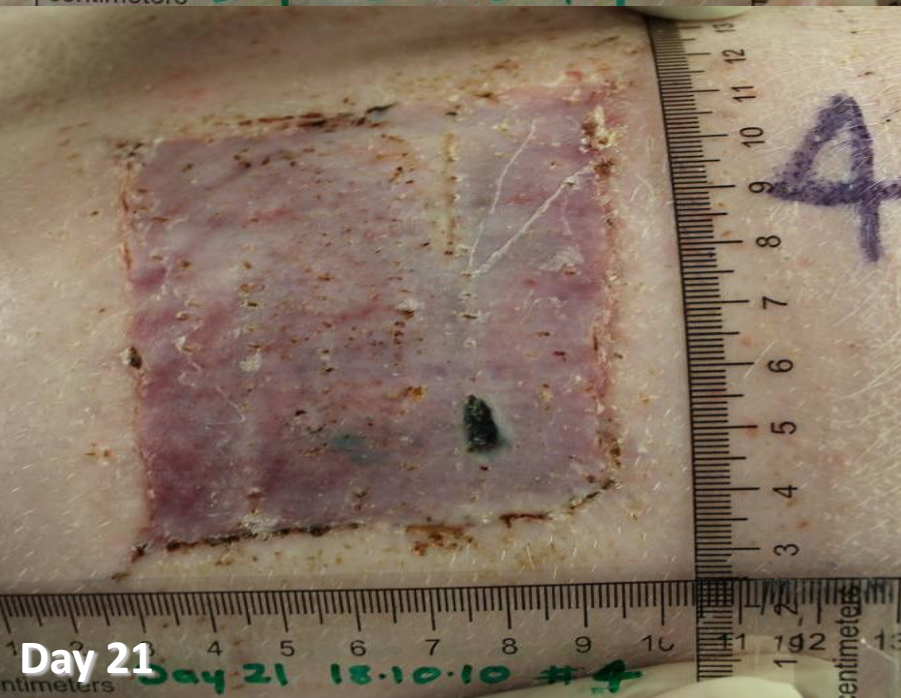
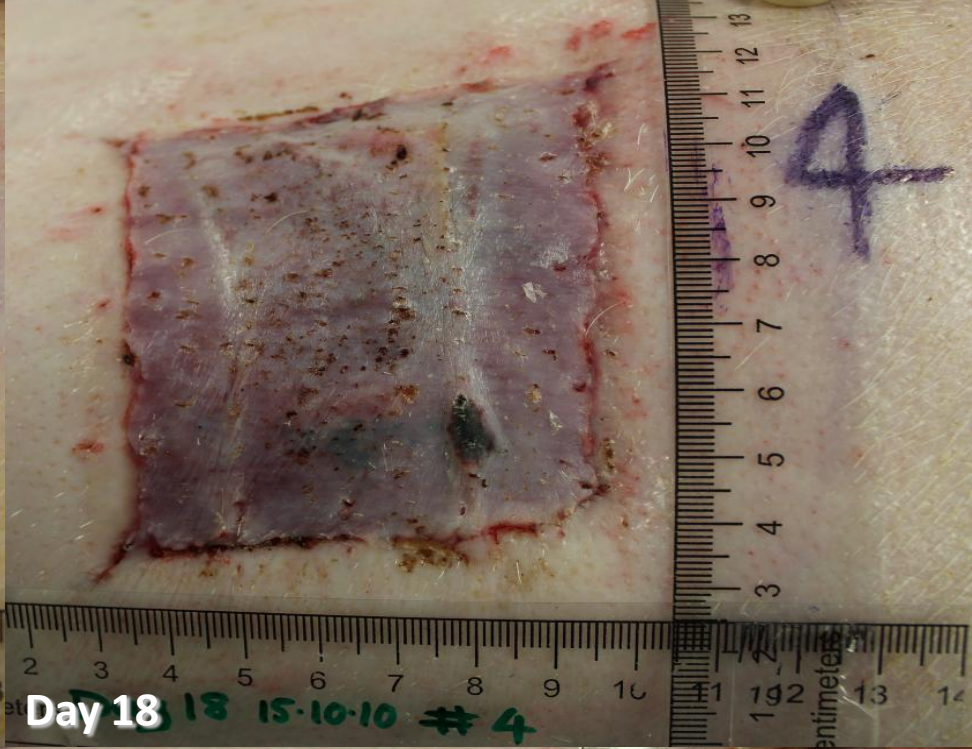
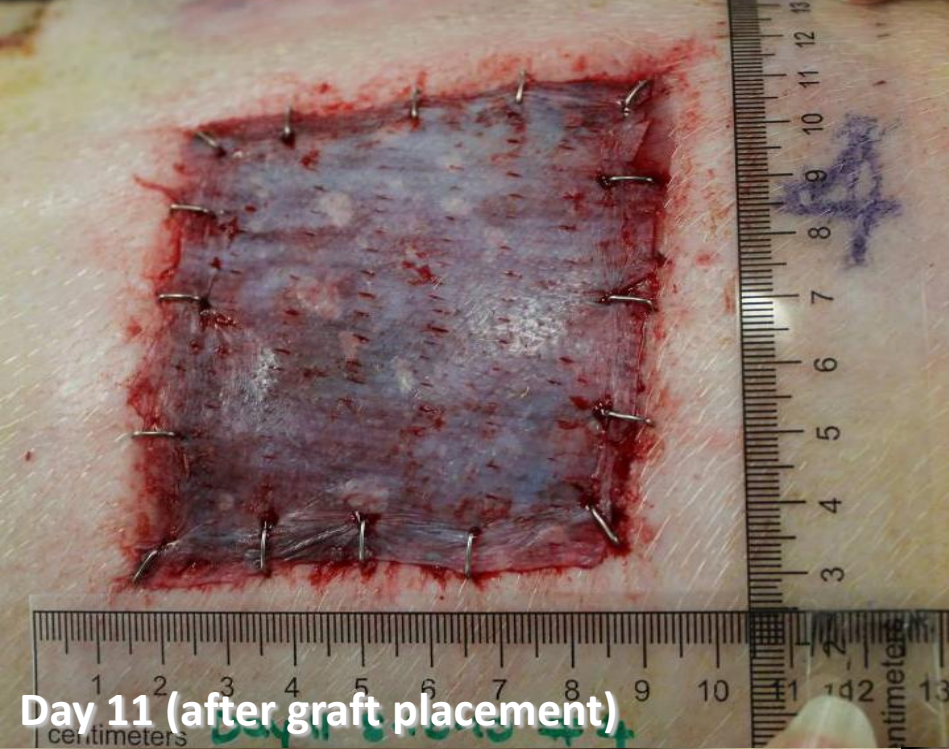
**BTM**

**(Biodegradable Temporising Matrix)**





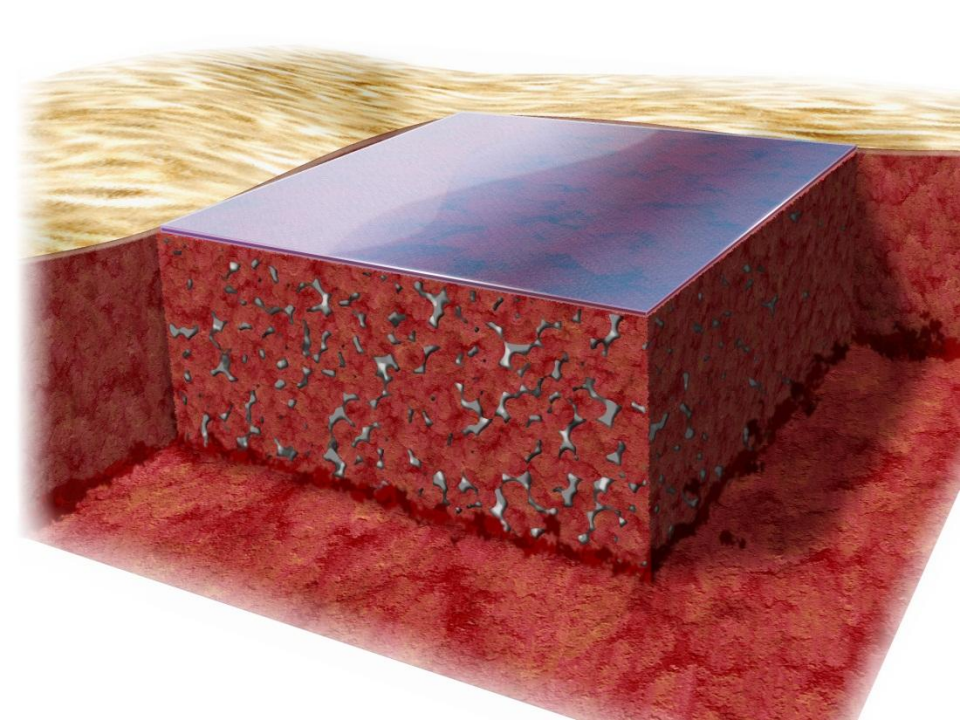
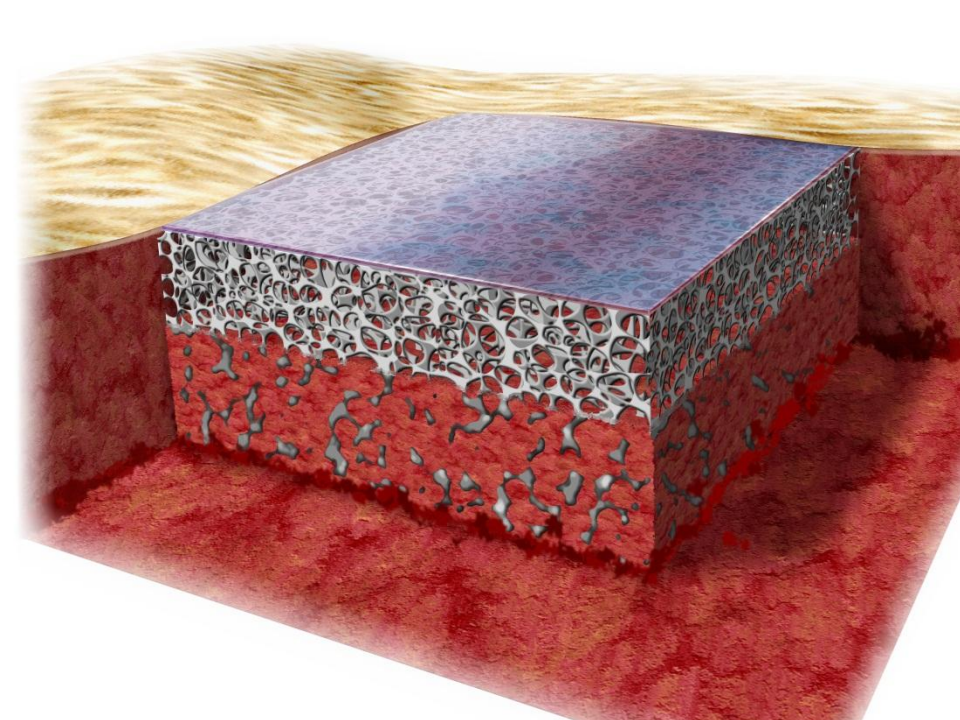
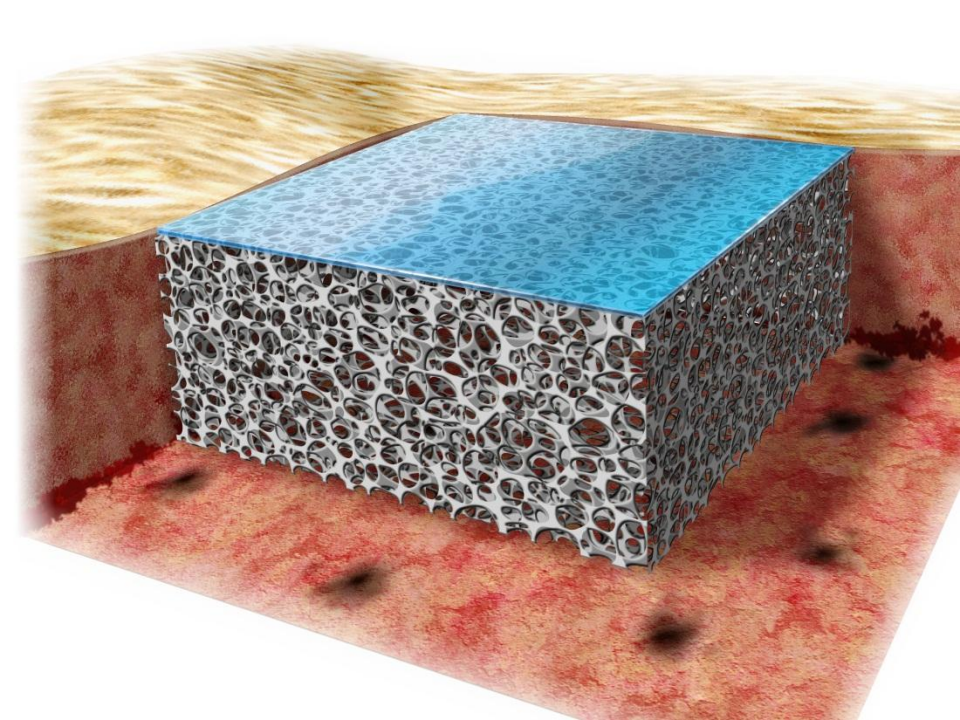






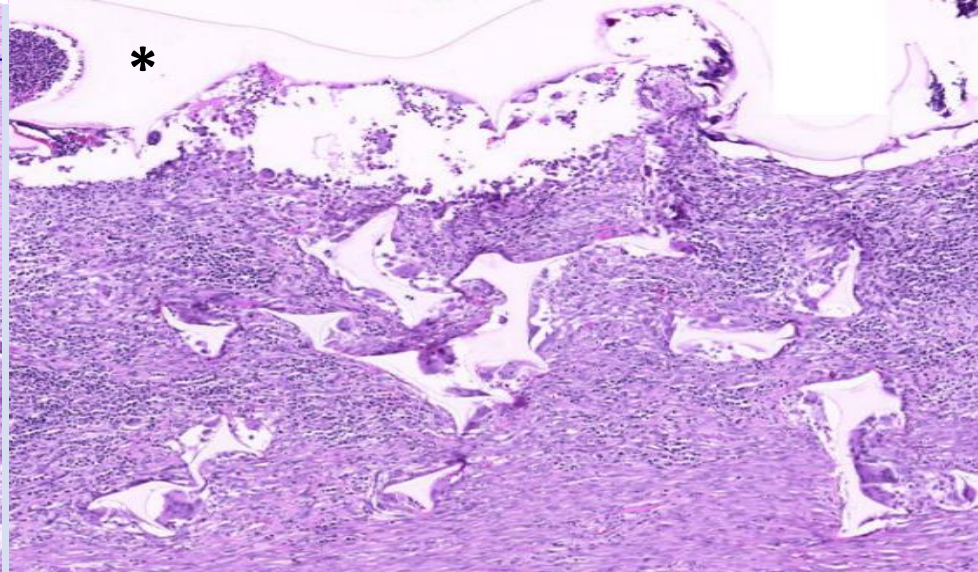
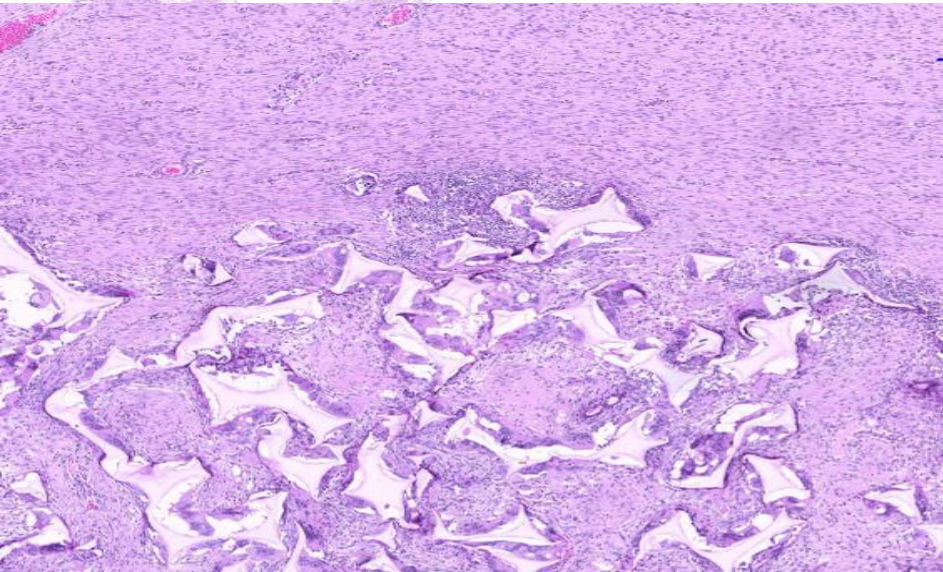
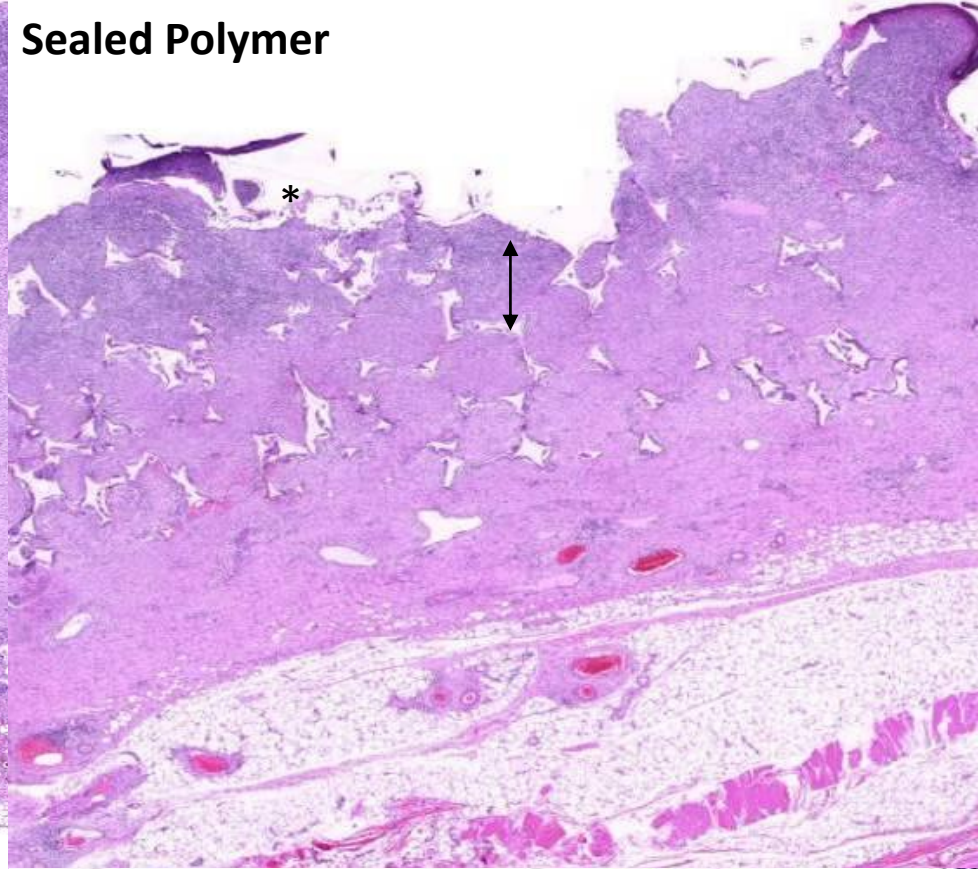
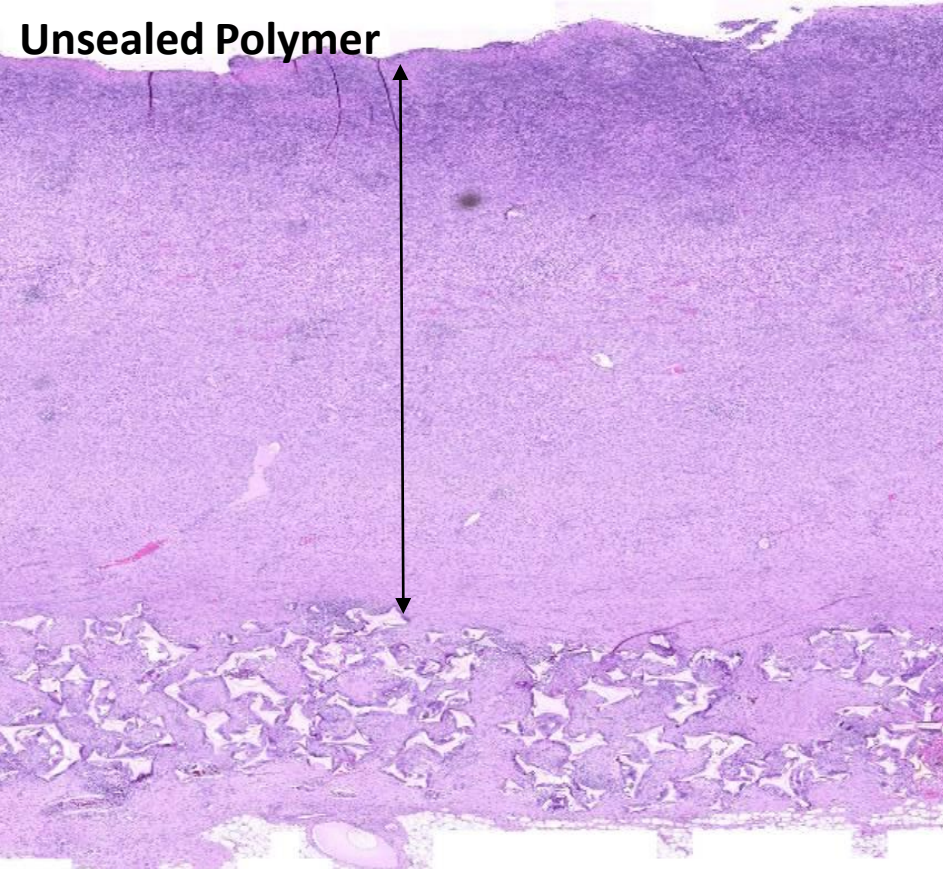




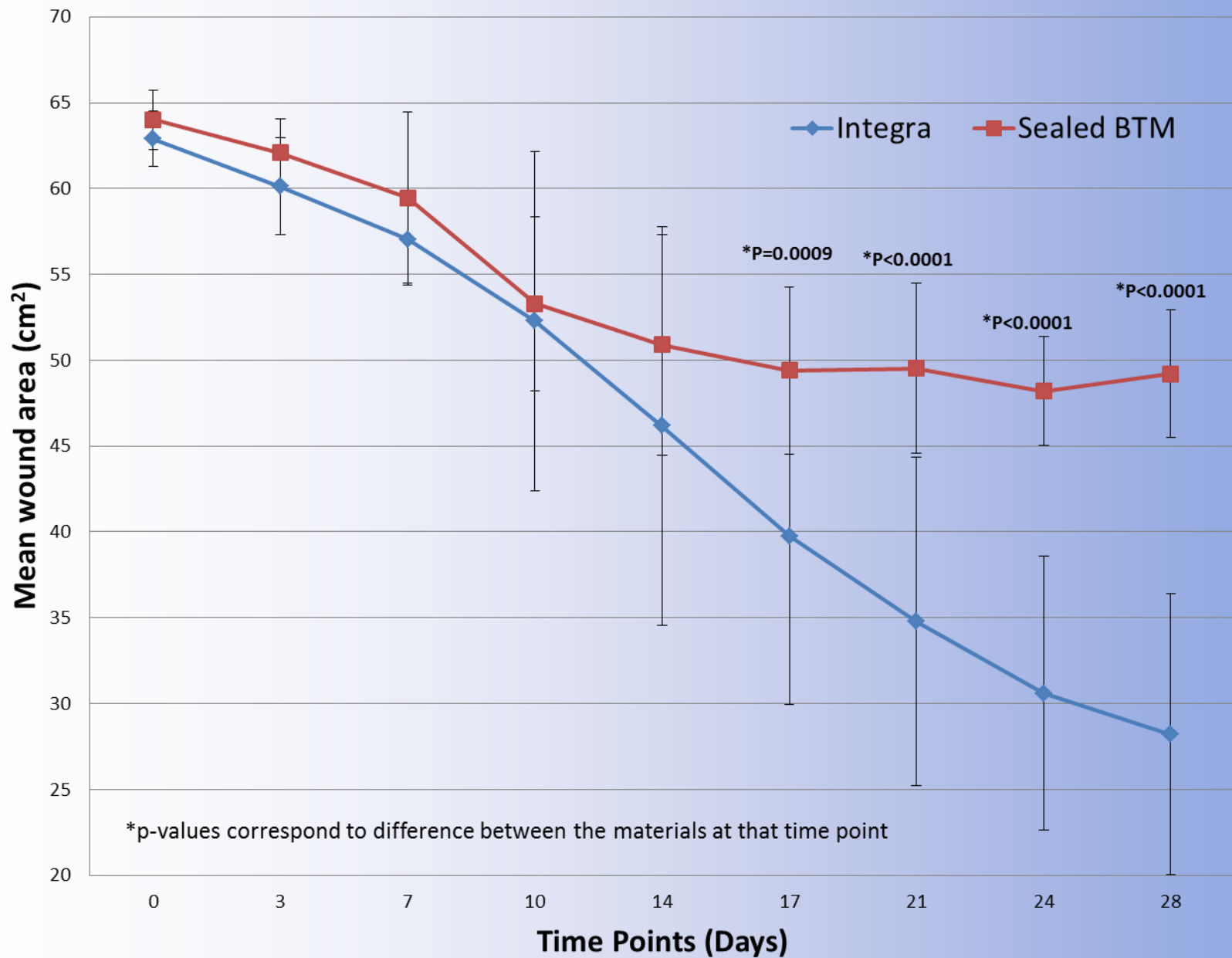


# INTEGRATION SCHEMATIC









CCS

(Cultured Composite Skin)

# CCS on BTM

*in-vivo*

Keratinocytes

CCS Matrix

Fibroblasts/collagen

BTM Matrix

Subcutaneous fat





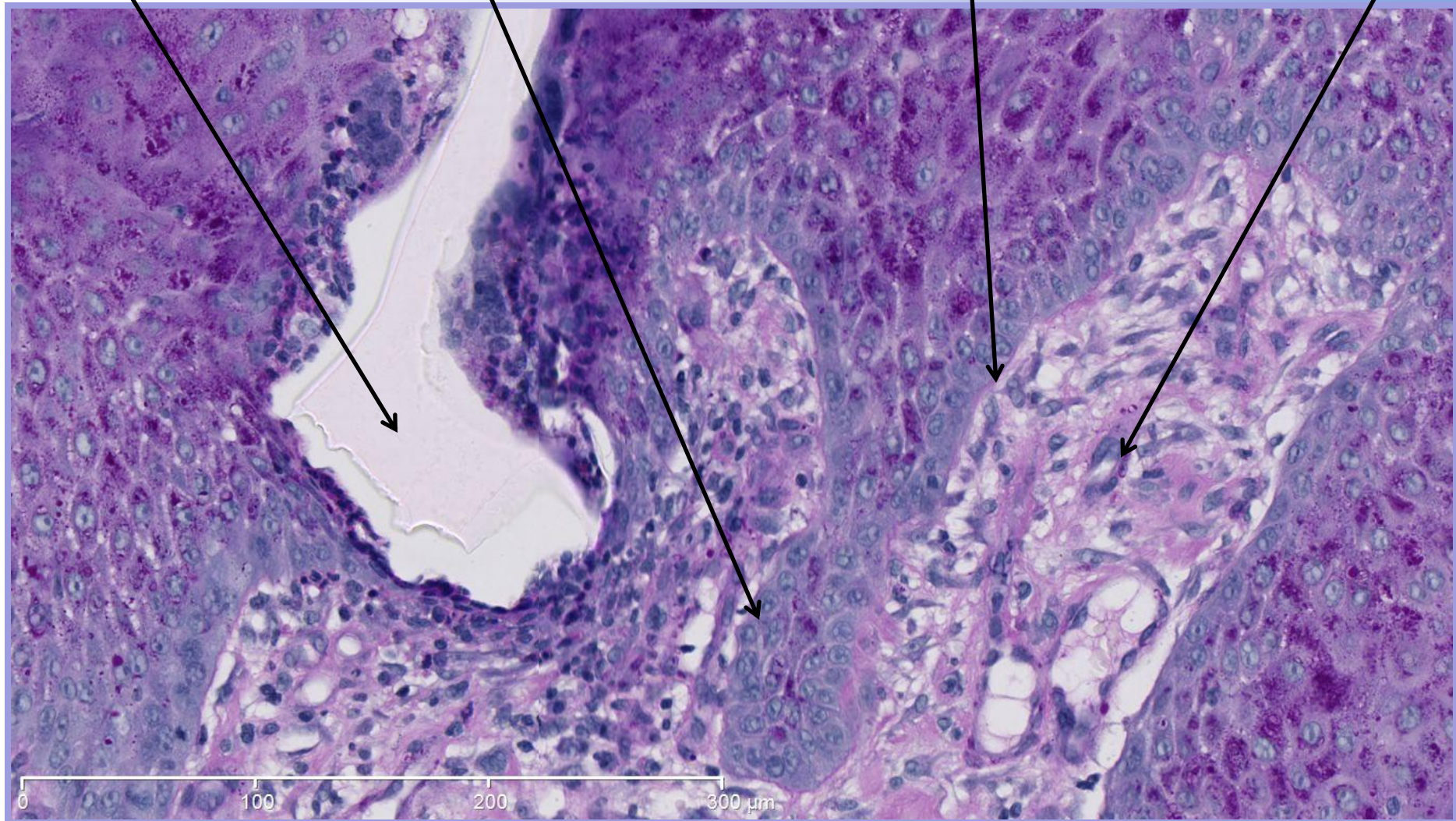
# CCS *in-vivo* (Day 7 post-application)

**Polymer matrix**

**Basal keratinocytes**

**Basement membrane**

**Fibroblasts**



# SUMMARY

- NovoSkin has a suite of products in development based on the NovoSorb platform, and generational products planned
- Good research evidence of safety of NovoSorb
- Good research evidence of efficacy of IDT and BTM
- Good proof of concept of CCS 'take'
- THEREFORE - SUCCESSFUL PROOF OF CONCEPT OF THE DESIGNED TWO-STAGE STRATEGY