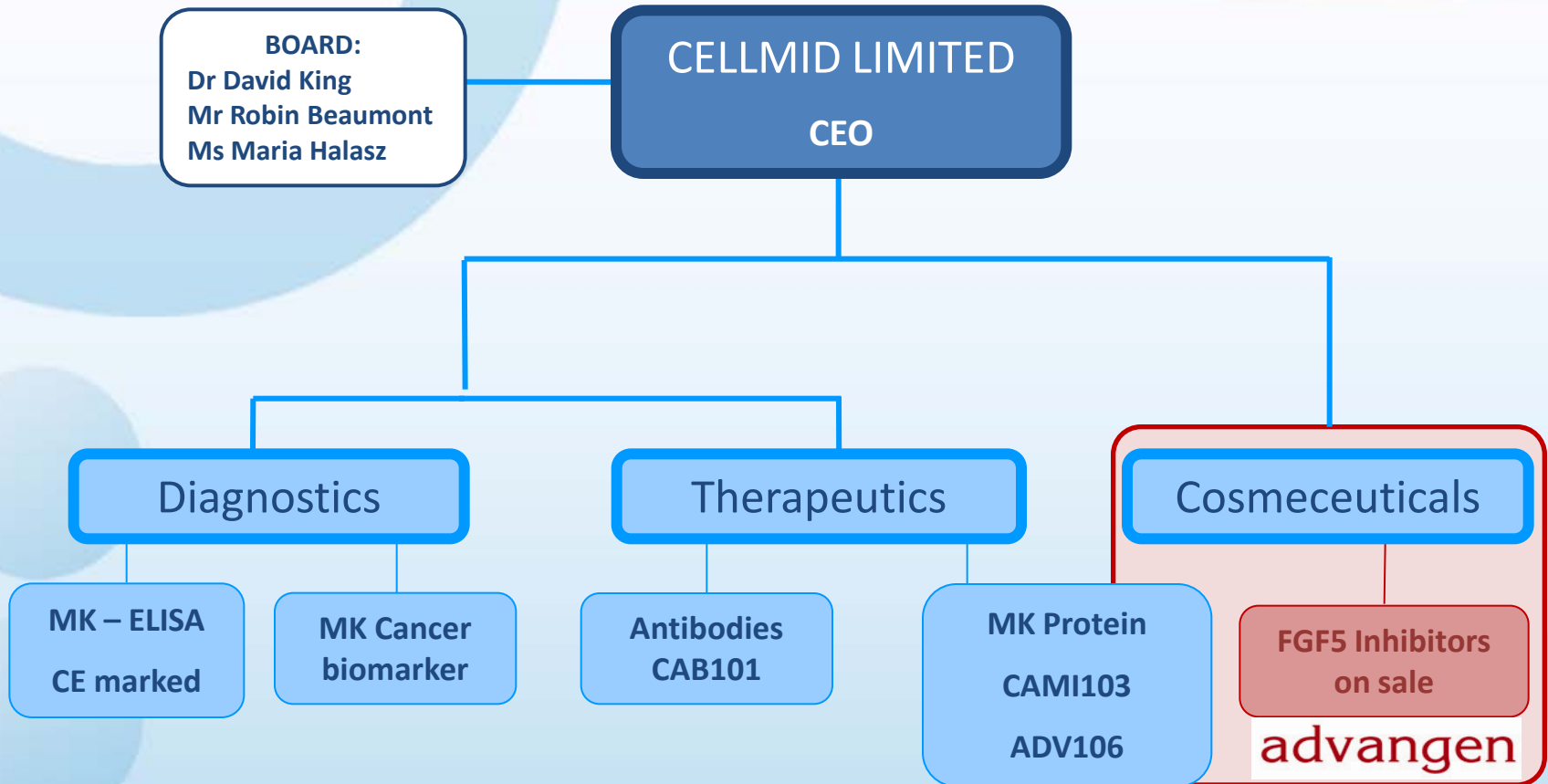


- Australian biotechnology company listed on the ASX (CDY.AX)
- Midkine company – owns novel therapeutic and diagnostic target
- Extensive scientific validation including 550+ publications
- Multiple revenue source from diagnostic and therapeutic products



Maria Halasz
CEO

halasz@cellmid.com.au



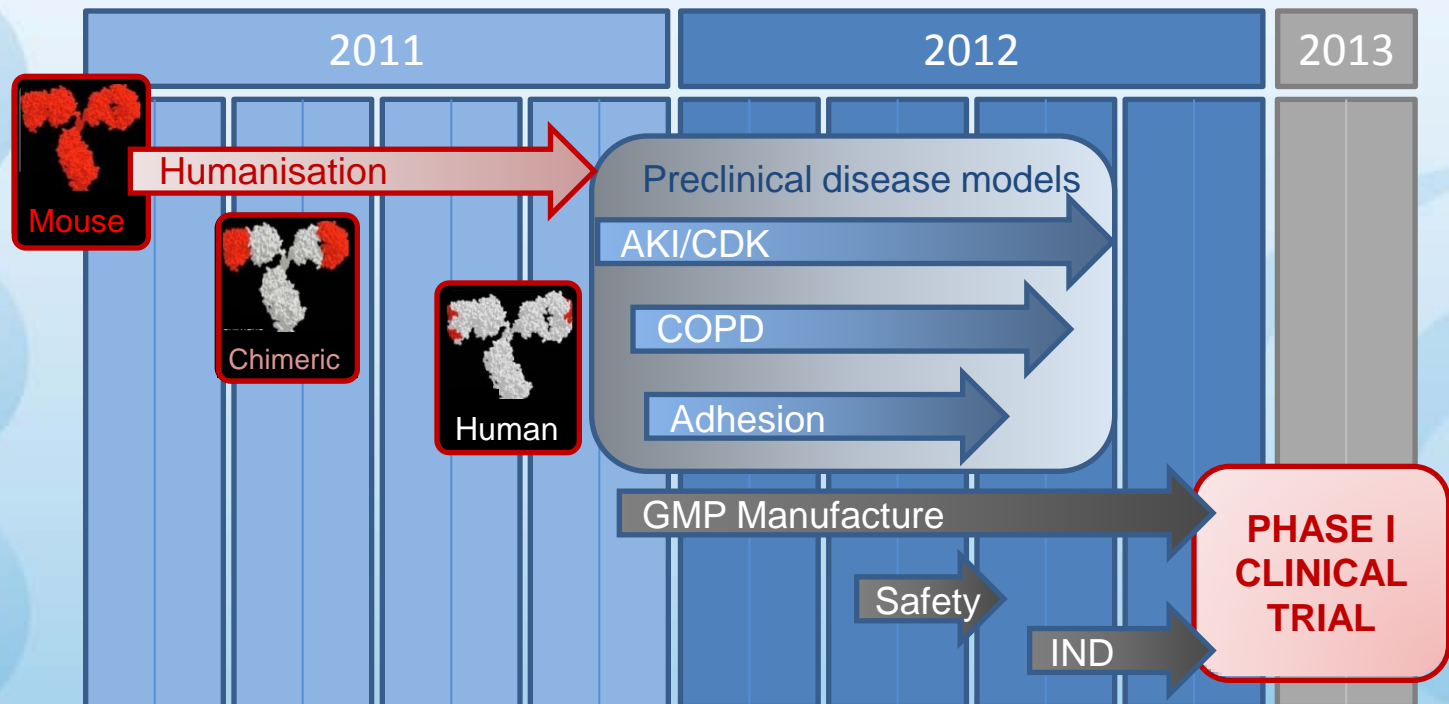
Key Investment highlights

- Multiple revenue source – unique target
- Undervalued - significant upside
- Significant revenue within 12 months
- Powerful patent position (21 patent families)
- Extensive knowledge base around MK
- Large inventory (\$7M retail value protein)

Lead therapeutic program

Hu91- Mk Ab for the treatment of inflammation

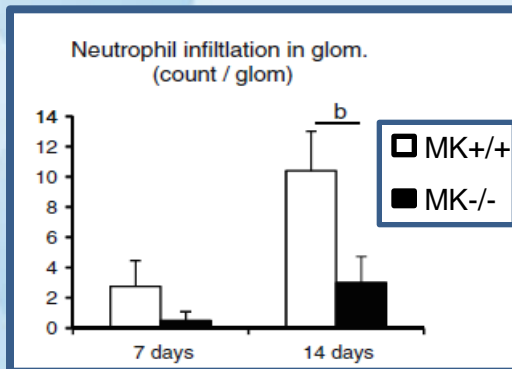
- Inflammatory conditions where MK-induced leukocyte infiltration underlies disease
- Diseases with current and near term unmet medical need and significant economic burden
- Indications where Cellmid has greatest patent protection
 - **Acute kidney injury (AKI) and chronic kidney disease (CKD)**
 - **COPD**
 - **Surgical adhesions**
- Parallel pre-clinical *in vivo* testing to accelerate lead indication to phase I trial



Antibody program 2011-2012

AKI/CKD

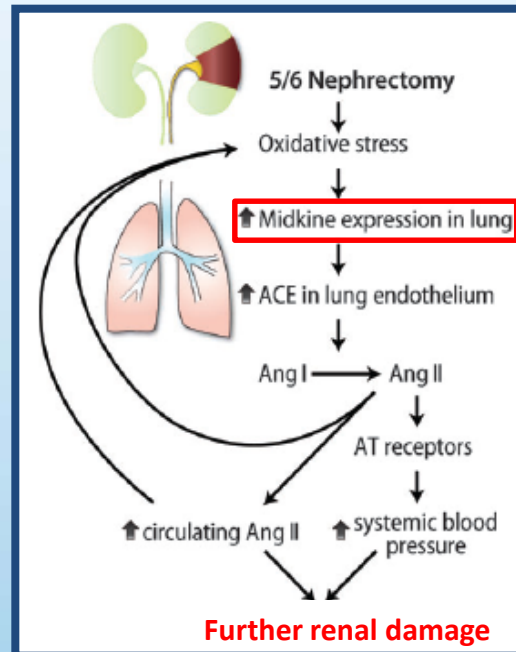
- MK Ab to prevent neutrophil & macrophage infiltration into the kidney
- Renal damage reduced for all disease models induced in Mdk^{-/-} mice
- MK AS reduced kidney damage in I/R renal injury



Kato et al 2011

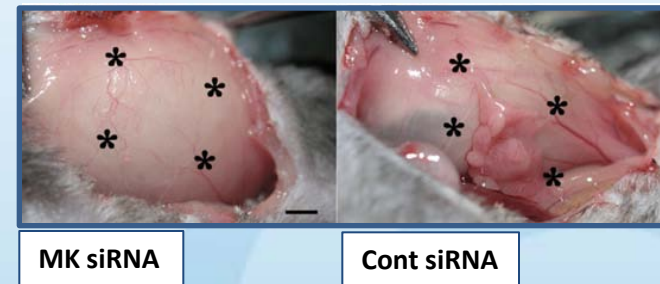
COPD

- MK Ab to prevent leukocyte infiltration
- MK causes pulmonary vascular remodeling during hypoxia
- Hypertension induced by lung MK expression



Adhesions

- MK Ab to inhibit leukocyte migration to the site of surgery
- Adhesions greatly reduced in MK^{-/-} mice
- siRNA administered intraperitoneally after surgery reduces adhesions



Inoh et al 2004

Antibody program 2011-2012

AKI/CKD

- 2009 global market **\$13.3 billion** (2016 forecast: \$19.8 billion)
- Limited ability to manage disease in the intensive care setting
- Provides an opportunity to treat rather than manage.

COPD

- The economic burden of COPD in the U.S. in 2007 was **\$42.6 billion** in health care costs and lost productivity
- Limited ability to manage disease - urgent need for new treatments that impact long-term management

Adhesions

- Post-surgical anti-adhesion market is estimated at **\$3 billion** in the US and **\$5 billion** globally
- **Currently no drugs** available for treatment
- HumAb could be used prophylactically

Lead diagnostic program

MK as a cancer biomarker

- Midkine is readily detected in serum, plasma and urine
- Blood elevation of MK often precedes symptoms – early diagnosis and disease monitoring
- Adds value to the full spectrum of cancer management
 - early diagnosis
 - prognosis
 - disease progression and treatment monitoring
 - screening
- Quest (Celera) Licence: MK plays an integral role as one of the six biomarkers on Celera's newly developed panel for accurately identifying malignant lung cancer in a 'never smoker' cohort

MK is over-expressed in tissue and/or blood in at least 26 different cancers

This protein is over-expressed in
 tissue and/or blood in at
 least 26 different cancers

	Breast	Prostate	Ovarian	Cervical	Uterine	Lung (NSC)	Lung (SC)	Lung (brain mets)	Neuroblastoma	Glioblastoma	Medulloblastoma	Primitive neuroectodermal	Meningioma	Neurofibromatosis type I	Gastric	GI stromal	Bladder	Colorectal	Duodenal	Oral squamous cell carcinoma	Esophageal SCC	Hepatocellular	Bile Duct	Pancreatic	Thyroid	Osteosarcoma
Blood	◀		◀		◀	◀	◀	◀	◀					◀	◀	◀		◀	◀	◀	◀	◀	◀	◀	◀	
Tissue	◀	◀	◀	◀	◀	◀	◀	◀	◀	◀	◀	◀	◀		◀	◀	◀	◀		◀	◀	◀		◀	◀	◀

- Listed on the ASX (ASX: CDY.AX)
- \$9M market cap
- Share price is \$0.02 (13 Oct 2011)
- Ave daily volume is 2.27M shares (3M)
- \$10M raised to date
- \$1.5M cash
- Burn rate is \$220K per month

TRULY UNDERVALUED

advangen

advanced gene science for hair

FOR SALE

Booth 64



Jo-Ju
Shampoo



Léxilis
Lotion For men



Jo-Ju
Lotion for women



Conditioning
Treatment